



PIZZA WORKTABLE

MODEL: 2 DOORS + 7 DRAWERS

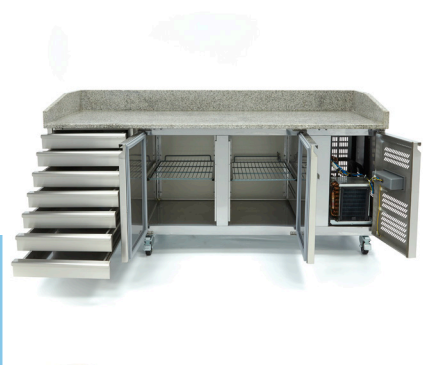


SPECIFICATIONS

Power	350 Watt
Connection	230V / 50Hz / 1Phase
Nett Weight	298.0 Kg
Gross Weight	383.0 Kg
Machine Dimensions	H1000 x W2020 x D800 mm
Packaging Dimensions	H1020 x W2060 x D830 mm
Packaging Volume	1.74 CBM
Packaging Material	Carton Box with Foam
HS Customs Code	84185019
EAN Code	8719632122425
Article Number	09400210

Robust pizza table with luxury design
With large granite worktop
Inside and out of stainless steel AISI 304
Extra powerful cooling system on the right side
4-door size with total content of 580L
2 Rugged stainless steel doors and 7 drawers
Equipped with adjustable grids (1 per door)
Dixell digital temperature controller
Cooling system with fan
Evaporator is foamed on 3 sides
Automatic defrosting
Zanussi compressor
Coolant R290 / CFC free
Thickness of insulation material 35 mm
Temperature: 0 ° to + 10 ° degrees Celcius
Extra drawers are optional

- 👑 HIGH QUALITY / LOW PRICES
- 👑 24 / 7 SUPPORT & SERVICE
- 👑 IMMEDIATELY AVAILABLE FROM STOCK
- 👑 TECHNICAL DEPARTMENT & WARRANTY
- 👑 EXCELLENT CUSTOMER SATISFACTION



4-door size with total content of 580L



Extra powerful cooling system on the right side



Dixell digital temperature controller