



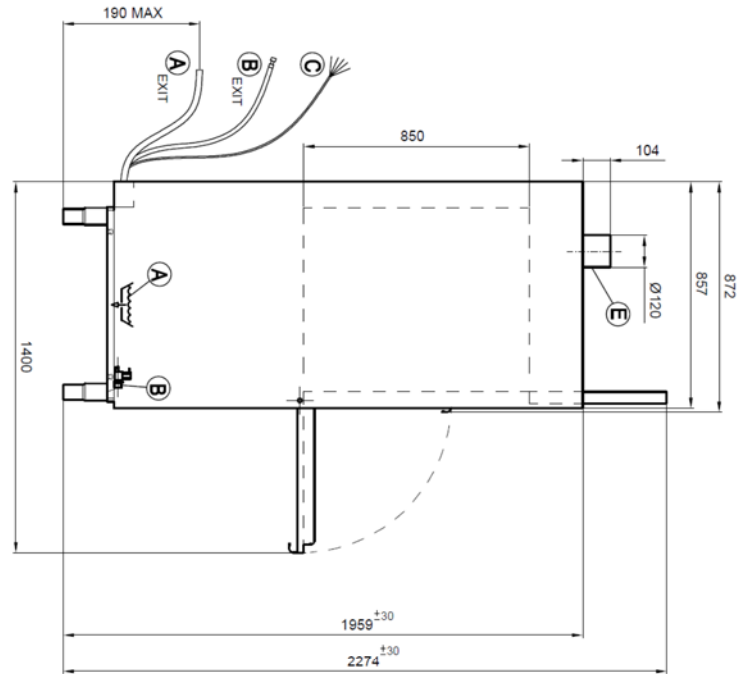
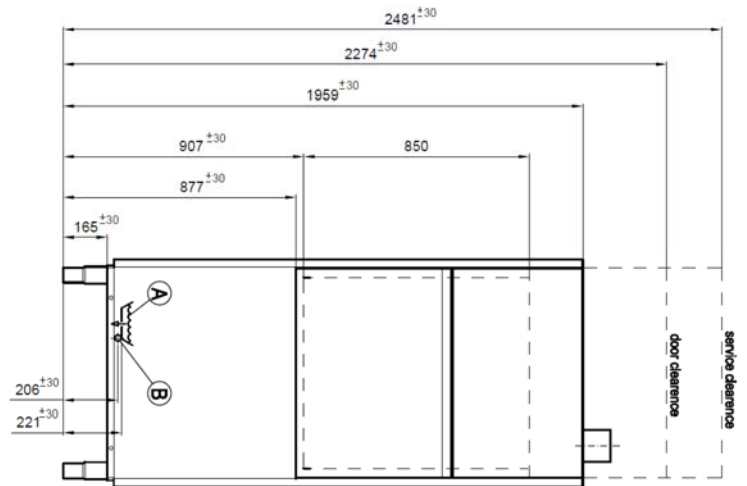
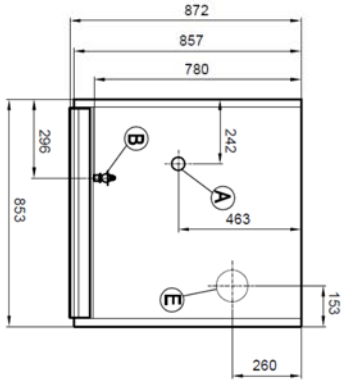
10/2019

# **Mod: DP7L/8P**

**Production code: LP612BEDD**

↘	Model	DP7L-8P	
	Code Production	LP612BEDD	
Interface :			
			
↕	Overall Dimension (Width-Depth-Height) *open	mm	853x857(*1400)x1959 (*2274)
	Packaging Dimension (WxDxH)	mm	1000x950x2200
	Gross weight	Kg	191
	Net weight	Kg	181
	Volume	mc	2,10
□	Rack size	mm	700 x 700
	Max door /hood opening	mm	850
	Max glasses/plate Height	mm	800
	General construction		double skin
	Door/hood Construction		double skin
↘	Tank construction		fully deep drawn
	Tank volume	liter	68
	Tank heating element	W	8.000
	Tank surface strainers		stainless steel
⊞	Wash pump type		double flow
	Wash pump power	W	2.700
	Wash temperature	°C	60-65
↘	Boiler type		without pressure
	Boiler volume	liter	12
	Back-flow system		break tank
	Boiler heating element	W	8.000
⊞	Rinse booster pump		YES
	Rinse booster pump power	W	200
	Rinse temperature	°C	80-85
	Rinse water consumption	Liter /rack	4
	Optimal external water pressure	bar	1 - 6
⊞	Drain system		overflow
	Drain filter		double filter
	Drain pump		optional
▶	Rinse aid dispenser		YES
	Detergent dispenser		YES
⚡	Wash cycle	sec	120 - 240 - 360 - continuous
	Electric Power	W	10.700
	Electric Connection	V - ph - Hz	400V 3N 50Hz
	Fuse	A	16
▶	Flat rack in stainless steel with slids	N°1	YES
	Tray supports in stainless steel	N°1	YES
	Electric cable		YES
	Drain hose		YES
	Fill hose		YES

A		∅ 50mm M	A EXIT		∅ 35 mm M
B		G 3/4" M	B EXIT		G 3/4" F
C		Power supply	E		Steam exhaust



Designed by: M.FRUCCI  
Date: 03.08.2018

**Installation layout**

Denomination:

**Utensil washer**

Code: LP6

Rev.: 00

